



St James'

CHURCH OF ENGLAND ACADEMY

Together we live and learn in the light of God
Kindness - Respect - Perseverance

Newsletter - Friday 17th January 2025

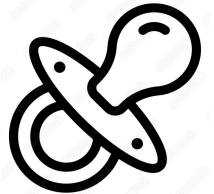
We are delighted to welcome the children back for another busy half term.

For your information, newsletters regarding your child's current learning in the classroom can be found on our website.

Further information about the work of our Trust, Hope Sentamu Learning Trust can be found on the website at <https://hslt.academy>

Good News

I am delighted to share with you the good news that Miss Worrall has safely welcomed her baby daughter into the world. I am sure you will join me, and all at St. James', in wishing her congratulations as they settle into family life together.



Attendance

A good attendance record has a positive impact on children's achievement, their ability to socialise and their emotional wellbeing. Please remember that we are unable to authorise any absences due to holidays taken during term time and that penalty notices may be issued (£80 per parent, per child).

Please notify the school office first thing in the morning if your child is absent for illness or a medical appointment.

Punctuality

It is also essential that children arrive in school on time each day to ensure they do not miss out on their learning. We have recently noticed an increase in children arriving late and having to come into school via the school office. Classroom doors are open from 8.45am and registration is at 8.55am. Children need to be in the classroom for this registration time.

School Uniform

Children continue to look smart in their

- Light grey trousers/skirts/shorts
- White polo shirts
- Red jumper or cardigans
- Black school shoes (trainers must be plain black with no coloured soles/strips/logos/laces etc)
- Sandshoes are needed to be worn inside school



Thank you for your support of our school uniform policy.

Please write your child's name in their uniform, this prevents any upset if items are misplaced.

PE Kit

Please ensure your child wears the correct PE kit at school. This consists of a

- Plain white T-shirt and plain red shorts
- Outdoor kit of plain black joggers and sweatshirts

If you need to order any items of school uniform, please contact the school office and they will be able to help you with this.

Outdoor Clothing

As the weather continues to be colder, please make sure your child brings a coat to school for playtimes and lunchtimes.

Jewellery

We don't consider it necessary for your child to wear any jewellery whilst at school. However, if you feel that this is essential, please make sure that this is limited to one small pair of stud earrings in the lower lobe area and one watch; these must be removed for health and safety reasons when taking part in P.E. lessons.

Important Information about Funding – Please help us to help your children:

We are trying to get additional funding into school to enable us to again begin taking the children on subsidised visits out of school to support their learning. If at any time you are in receipt of any of the benefits listed below:-

Income Support, Jobseekers Allowance, Child Tax Credit (with an annual income of not more than £16,190 as assessed by the Inland Revenue), Guarantee element of State Pension Credit, Income Related Employment and Support Allowance or an Asylum Seeker

and you have not completed a form since receiving these benefits, please pop into the office and we will help you to complete a simple form that will ensure your child gets free school meals when they are in key stage 2 and helps us to get additional money into school. This is called Pupil Premium. Please speak to Mrs Todd or Mrs Allen, our Administration Officers, if you require more information.

School Security and Safety

Lunchtimes

The entrance gates to the school field remain locked throughout the day between 8:55 am and 3:10 pm. If your child goes home at lunch time please arrange to meet them at the main door into the school (school office entrance). Children should return into school via this route on their return after lunch.

Car Parking

It is imperative that no parents or taxis use the school drive to turn round, drop off or to park. For the safety of all of our children please do not come onto the school site in your car to drop off or collect your children. This applies before school, at lunchtime and at the end of the day. The yellow zig zags outside the school site must also be kept clear. These are monitored randomly and parking on these is illegal and may result in a fine of £100 and 3 penalty points on your licence.

No dogs on the school site

Please remember that dogs are not allowed on the school site, even if being carried.



No smoking and vaping

We are a non-smoking site, this includes the use of vapes/e-cigarettes.



Keeping Safe on the Playground Before and After School

Adults or children riding bikes or scooters on the playground before or after school presents a health and safety risk for other children and adults. Please make sure that your child does not ride his/her bike or scooter on the playground at the beginning or end of the school day.

For health and safety reasons it is essential that no children climb on the play equipment on the playground or field before or after school.

Safeguarding / SEN / First Aiders

Child Protection Co-ordinator/ Safeguarding Lead: Miss Strickland

Deputy Safeguarding Leads: Mrs Moore and Mrs Hunter

SENDCo: Mrs Moore

Our first aiders are:

Mr Jowett, Miss Brown, Mrs Allison, Mrs Calvert, Mrs Emerson, Mrs Drury, Mrs Ledger, Miss Richardson, Mr Wigley, Mr Jowett, Miss Hinds and Mrs



Gardiner.

Do you know how to keep your child safe at home when they are using a mobile phone, tablet or similar electronic device?

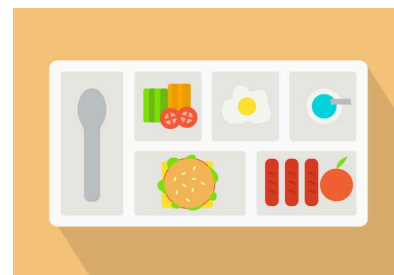
Although we teach the children on a termly basis about keeping themselves safe whilst online, we are still hearing concerning stories from some of our parents about unsuitable material or conversations their children have accessed (often quite by accident because settings on devices did not protect them). Many parents and staff are surprised and alarmed by the extent that some people will go to, to gain access to children online.



Information on how to keep your child safe online can be found on the school website.

Breakfast Club

Breakfast club is open daily for working parents from 7.45am and costs £1.50 per child per day. Please remember that this must be booked prior to attendance and children can arrive at breakfast club up to 8:20am.



School Dinners

Just a reminder that as notified from January there has been an increase in prices for school dinners to £2.53.

After School Club

Our After School Club is open to pupils from Reception to Year 6 and children will need to be collected from the main school office. Children will be provided with a drink of juice and a biscuit after school – allergy information will be checked and followed.

Children staying between 3.15pm – 5pm will be charged at £5.00 per night while children staying beyond until 5.30pm will be charged at £6.00 per night. We are still monitoring this additional half an hour to see if this can be sustained long term. Children will need to be booked and paid for (either through the ParentMail App or at the school office) prior to attending the After School provision.

Important dates for your diary



Below are some important dates for your diary. Most events will have additional information released closer to the time.

Wednesday morning from 16th January to 26th February	Y5 to MKM Stadium to participate in the Run With It learning and sports programme
Monday 20th January	Y5 - Virtual Workshop - Myth-Busting Ancient Egypt
Monday 27th January	Y6 - Virtual Workshop - Wicked Weather - Arctic Experience
Tuesday 28th January	Y6 - Business visit to C4Di
Friday 7th February	Y4 - Virtual Workshop - Jorvik: Meet a Viking
Tuesday 11th February	Internet Safety Day
Friday 14th February	3:15 pm - School closes for the half term holiday
Monday 24th February	Children return to school
Friday 7th March	World Book Day
Wednesday 19th March	Y1 Museum visit - Victorian workshop
Wednesday 2nd April	Y3 - Virtual Volcanoes Workshop
Friday 4th April	3:15 pm - School closes for the Easter holiday
Tuesday 22nd April	Children return to school
Monday 5th May	School closed—Bank Holiday Monday
Friday 23rd May	3:15 pm - School closes for the half term holiday
Monday 2nd June	Children return to school
Friday 18th July	3:15 pm - School closes for the summer holiday